

# Belgotex®

A world  
of perfect  
choices\_



## Crescent

Perfect for style  
and comfort.



CRESCENT | CONCRETE 92

Colours shown may vary slightly from the actual product and should be used as a guide only.

# Crescent

Divinely plush and with colours that expertly coordinate with current interior trends, Crescent is the perfect choice for luxurious style and effortless maintenance.



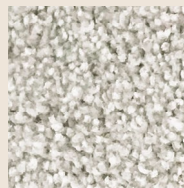
**STAIN resistant**



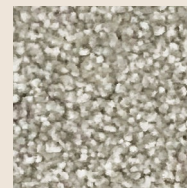
**FADE resistant**



**10 year WARRANTY**



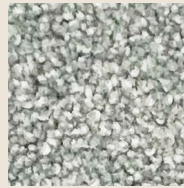
**KERB 90**



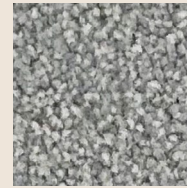
**TRAIL 94**



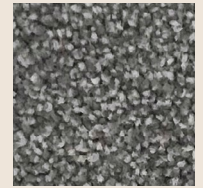
**ALLEY 777**



**CONCRETE 92**



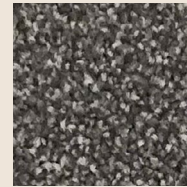
**STEEL 77**



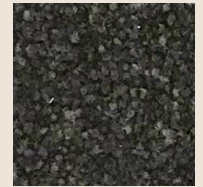
**GRAVEL 45**



**DIESEL 79**



**PAVEMENT 73**



**TURNPIKE 799**



**ASPHALT 76**

<b>SOLUTION DYED NYLON</b>	<b>YARN WEIGHT</b> 2250g/m <sup>2</sup> / 66oz/yd <sup>2</sup>
<b>PILE HEIGHT</b> 18.0mm	<b>TOTAL THICKNESS</b> 20.0mm
<b>WIDTH</b> 3.66m Wide	<b>EXTRA HEAVY DUTY RESIDENTIAL</b> <b>LIGHT DUTY COMMERCIAL</b>



\*Belgotex are dedicated to the care and maintenance of our products. Visit [belgotex.co.nz](http://belgotex.co.nz) for full cleaning and maintenance guidelines.

