

# B.

## STAIN PROOF CARPET CARE AND MAINTENANCE

Premium Stain Proof SDN | Premium Soft Stain Proof SDN | Stain Proof SDN | Stain Proof Miracle Fibre

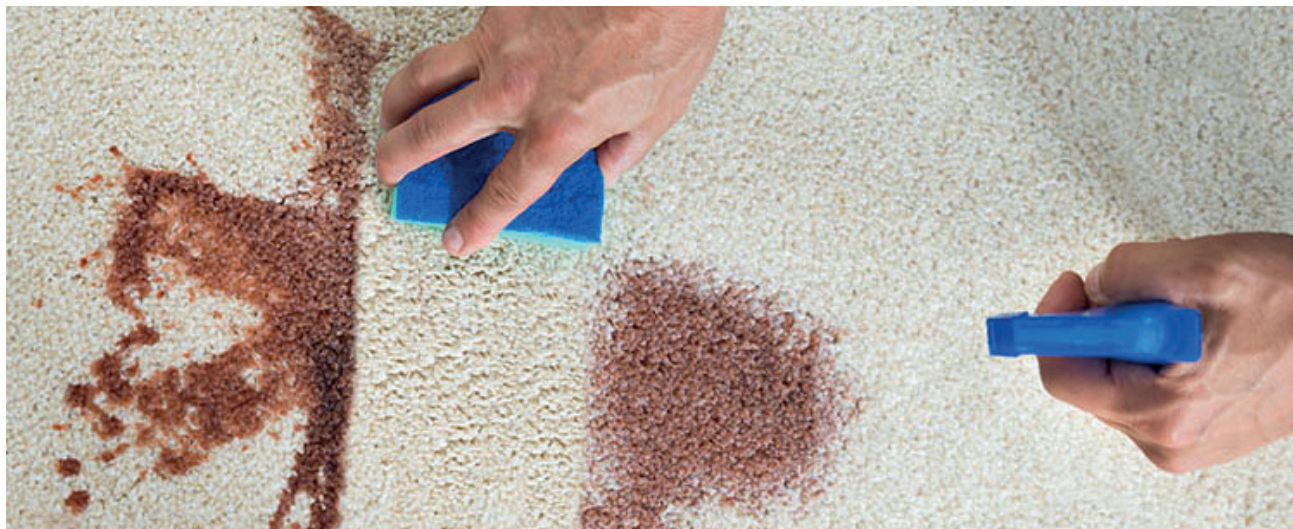


A WORLD OF CHOICE

# Belgotex®



# CLEANING GUIDE



- The faster you act, the better the results.
- First, remove as much of the foreign material as possible: carefully scrape off thick or sticky material with a spoon, vacuum up crusty pieces if it is dry, or blot with a white paper towel if the stain is wet.
- Identify the stain and refer to the stain chart before you begin.
- Never scrub the stain.

## VACUUM FREQUENTLY

- Thorough vacuuming removes dirt particles that dull the carpets appearance and cause fibre damage.
- Make sure your vacuum cleaner is in good working order; remember to change dust bags and clean filters regularly.
- Heavy traffic areas like stairs and corridors should be vacuumed daily.
- Vacuum cleaners should have 'high suction' and no beater brush.

## PREVENT SOILING AND PILE DAMAGE

- Place walk-off mats at all entrances.
- Use carpet protectors under heavy furniture and furniture with castors.

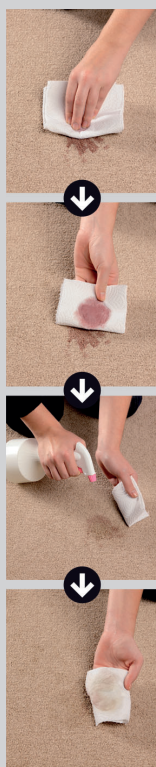
## ANNUAL PROFESSIONAL CLEAN

- When a carpet appears dirty even after vacuuming, it's time for a professional clean.
- Consult a professional cleaner for the best method of cleaning.
- An annual professional hot water extraction is required to retain your warranty.

## STAIN REMOVAL TRICKS OF THE TRADE

- Always blot from the outside in to minimise the stain area.
- Never use any of the solutions in concentrations stronger than recommended and always follow manufacturer's instructions.
- Use acetone and dry-cleaning fluid in ventilated conditions only.
- Pet "accidents" and certain other stains may reappear, as a result of "wicking". If, after repeating the stain removal procedure, the stain continues to reappear, contact a professional carpet cleaner for assistance. Note: Please remove urine stains as soon as possible. This warranty does not cover stains that have not been dealt with immediately, and have permeated the backing of the product.
- If a stain cannot be identified or is not listed in this guide, first use Procedure 1. If the stain shows no sign of being removed, try Procedure 2.
- Some harsh stains may require the procedure to be repeated several times.

# STAIN CHART



## 1. BLEACH AND WATER

Mix a fresh solution of 50% clear household bleach and 50% warm water in a spray bottle. Blot or scrape up the stain as much as possible. Spray the solution directly on the carpet.

### DO NOT OVER-WET.

Blot the carpet surface, working from the outside of the stain to the centre. Repeat until the stain disappears. Spray with clean water and blot until all bleach is removed. Absorb remaining moisture with folded white paper towels weighted down with a heavy object that will not stain. When completely dry, vacuum to restore pile texture.

## 2. PURE ACETONE

(AVAILABLE AT PHARMACIES)

Blot or scrape up the stain as much as possible. Apply a small amount of pure acetone to a white cloth and work in gently.

### DO NOT OVER WET.

Blot carpet surface, working from the outside of the stain to the centre. Repeat until the stain disappears. Absorb remaining moisture with folded white paper towels weighted down with a heavy object that will not stain. When completely dry, vacuum to restore pile texture.

Stain	Method	Stain	Method
Beetroot Juice	⬇️	Milk	⬇️
Betadine	⬇️	Mud	⬇️
Blood	⬇️	Mustard	⬇️
Butter	⬇️	Nail Polish	⬆️
Chocolate	⬇️	Machine Oil	⬇️
Coffee/tea	⬇️	Peanut Butter	⬇️
Concentrated Juice	⬇️	Pen Ink	⬇️
Cooking Oil	⬇️	Paint	⬆️
Cola/Fizzy Drinks	⬇️	Rust	⬇️
Curry Paste	⬇️	Salad Dressing	⬇️
Egg	⬇️	Shoe Polish	⬆️
Food Colouring	⬇️	Spaghetti Sauce	⬇️
Grape Juice	⬇️	Tomato Sauce	⬇️
Gravy	⬇️	Urine	⬇️
Grease	⬇️	Vomit	⬇️
Jam	⬇️	Vinegar	⬇️
Lipstick	⬆️	Wax Crayons	⬆️
Marker Pen	⬆️	Wine - Red	⬇️
Mascara	⬇️	Wine - White	⬇️

⬇️ Bleach and Water    ⬆️ Pure Acetone    (where both appear you can use either method)

# CARPET CHARACTERISTICS



## **TRACKING**

Tracking is the imprint left by footprints on your carpet. This is common on all cut pile surfaces and usually disappears after a thorough vacuum, however it will reappear after the carpet is walked on again. This is seen more often in high traffic areas such as doorways and hallways. These areas should be given more attention during vacuuming.

## **PILE REVERSAL SHADING**

All cut pile carpets develop light or dark patches over time. Known as shading or watermarking. It is caused by the carpet fibres bending and reflecting the light differently. Shading can not be predicted or prevented but is more related to the carpet use rather than construction. When caused by foot marking and vacuuming, pile shading is temporary and can be reversed by vacuuming or brushing the carpet in the normal direction of pile lay. Shading does not affect the wear or lifespan of the carpet and is not considered a flaw or defect.

## **SHIFT LINES**

Parallel lines that appear on the surface of loop pile carpets. More apparent with large designs or patterns. This can also be affected by colour and light sources.

## **SEAM PEAKING**

Seam peaking is normal when joined carpet is stretched into place. Lighting conditions can accentuate a carpet seam and create the impression that the pile on the side closer to the light source is a lighter shade than the pile on the other side of the join. Carpet seams are never invisible but they should be straight, aligned and as flat as possible.

## **APPEARANCE RETENTION**

All carpets change appearance over time. Carpet pile will flatten to some extent due to normal use. Regular vacuuming and periodic professional cleaning will reduce the degree of flattening.

Matting is a wear-induced characteristic that is seen as the merging together of carpet tufts to the stage where they may become less defined. Matting occurs in all carpets to some extent and is not considered a manufacturing defect unless it occurs rapidly or to an unacceptable degree.

## **PATTERN MATCHING**

Manufacturing processes introduce stresses and pressures on the carpet structure in both the length and width directions. As a result, a repeating pattern may not exactly match along the length of the carpet or across its width, particularly from one production run to another.

## **UNDERLAY**

Like carpet, underlay is available in various grades and qualities. An underlay should be firm but comfortable. As a guide, standing on the underlay you should not be able to feel the floor with the heel of your shoe. If replacing carpet, do not be tempted to use the existing underlay. It will have the same wear patterns as your old carpet and these will quickly appear in a new carpet and will void your Belgotex carpet warranty.





**Contact Us:**

P. 0800 377 753

F. 0800 377 754

W. [belgotex.co.nz](http://belgotex.co.nz)

**Flooring Design Centres:**

6-10 Akepiro Street, Mt Eden, Auckland

25 Leslie Hills Drive, Riccarton, Christchurch

The colours shown may vary slightly from the actual product and should be used as a guide only. Please refer to our website for all warranty information.

**Belgotex®**