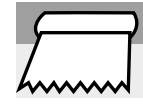


Before laying the floor covering, it should be inspected, so as to detect any visual defects. In the event of any visual defects, please notify Belgotex NZ and do not start laying the product before receiving their approval.



Min ambient temperature: 10°C



Min substrate temperature: 10°C

MATERIALS	FORMAT	CODE	NOTES
GTI EL5 CONNECT	635x635 / Th 6mm	3551 followed by colour code	
Copper strip	L10mm / Th 0,08mm	0586 0001	Self tape copper strip is not permitted
GTI EL5 CONNECT ACCESS	635mmx320mm	2717 followed by colour code	
GTI EL5 CONNECT CORNER	320mmx320mm	2718 followed by colour code	
GTI finishing profile		H 202	

ANTISTATIC ASTATIC FLOORINGS (ASF) < 2 kW

Standard fitting. These floorings do not require any specific fitting method. (No copper strip required)

DISSIPATIVE (DIF) AND CONDUCTIVE (ECF) FLOORINGS

Fitted with copper strip: code 0586 (length: 200 ml)

Store the tiles for 24 hours in the room where they will be fitted.

REQUIREMENT SPECIFICATION FOR CONDUCTIVE FLOORINGS:

It is the responsibility of the client and/or contractor to set out the applicable standard in the requirement specification.

METHODS FOR RESILIENT FLOOR COVERINGS:

Europe: EN 1081. Transverse resistance and surface resistance on tripod

USA: ASTM F150 /NFPA 99 (2 cylindrical electrodes)

METHODS FOR ELECTRICAL INDUSTRIES:

Europe: CEI 61340-4-1

USA: ANSI/ESD S 7.1

For all other methods, see F Material technique

1. LAYING

Preparation

Moisture content 7% at 4 cm with a carbide bomb test.

This flooring must not be laid in rooms subject to temperature fluctuations greater than 20°C.

This flooring does not remove the need to prepare the substrate.

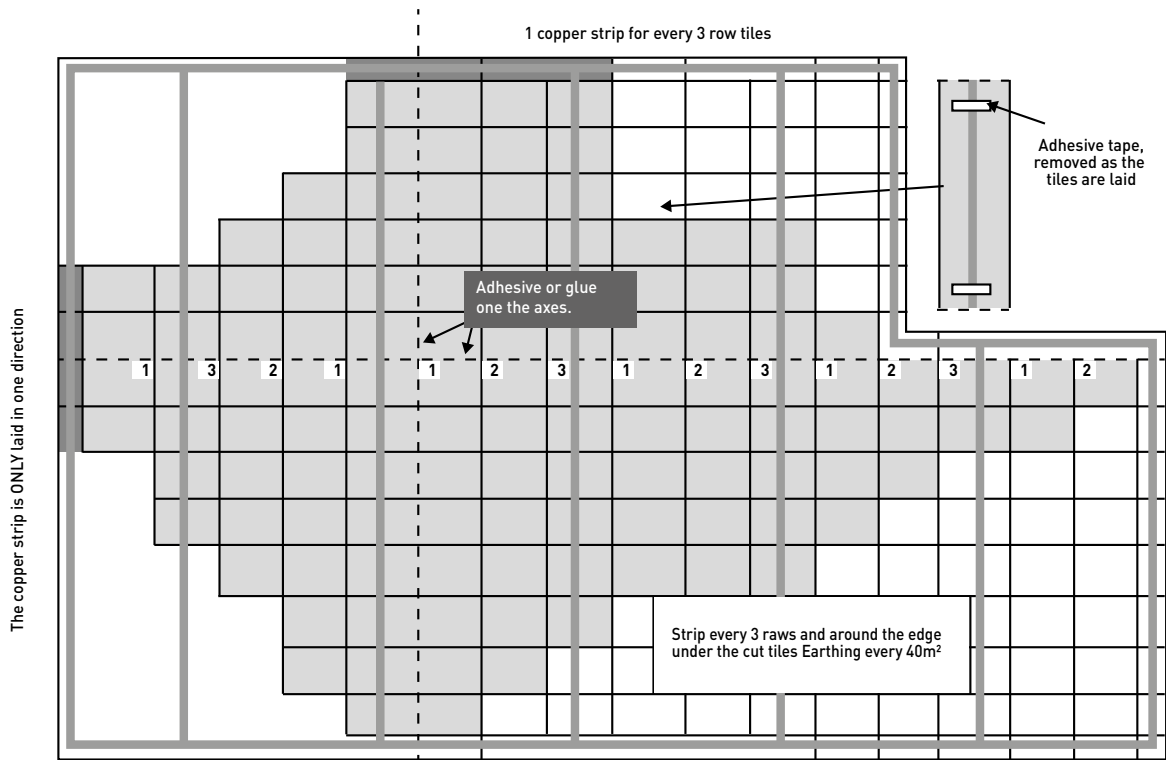
To guarantee good conductivity, you must ensure that the substrate is level.

Because this flooring has specific electrical characteristics, you are recommended to lay it as follows.

1.1. LAYING THE STRIP

- Lay one copper strip for every 3 rows as you lay the tiles and in one direction only. Lay a copper strip around the edge of the room. Use adhesive tape to hold the strips in place, removing the tape as you lay the flooring. It is important that the copper strip is always in contact with the backside of the tile.
- Leave some extra length at the end (about 15 cm) so the electrician can connect it to earth for every 40 m².
- Encircle the room with a copper strip around the edge.
- The copper strip can be located later with remote imaging.

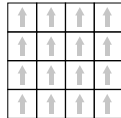
Do not use self-adhesive copper strip as the incomplete contact with the back of the material may impair the earth, depending on how level the substrate is.



1.2. LAYING THE TILES

• Precautions

- The tiles are supplied on pallets. Different batches must not be mixed together.
- Laying direction: tiles are ALL in the same direction. Observe the direction indicated by the arrow on the backside of the tile.
- Pressed materials, such as GTI tiles, may have dimensional tolerances varying between series or between colours. In this case, the tiles can become slightly offset. Therefore, the entire row of tiles must be cut to continue laying.
- Loose laying is limited to 500 m2. Above 500 m2 it is necessary



to divide the surface into 500 m2 sections applying an extra large double-sided adhesive tape before laying the copper strip and the tiles. For details, see installation guideline [413] GTI Max Connect, section 2.3.1.

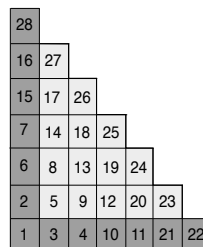
• Implementation

- Mark out the axes on the ground.
- Interlock the tiles, laying them all in the same direction.
- Follow the axes you marked out, laying the tiles in a staircase pattern.
- As you move forward, remove the adhesive tape holding the strips.

1.3. INTERLOCKING (INSTRUCTIONS, TOOLS, ETC.)

To interlock the tiles, strike them with a non-rebound mallet or a synthetic mallet.

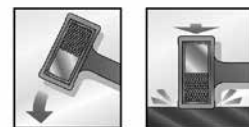
- The tiles are interlocked from the angle to the edge.
- Position all the tiles in the same direction, following the arrows on the backside of the flooring.



TOOLS REQUIRED :

Cutter - Tape measure - Metal ruler - Jigsaw - Circular saw - Synthetic resin mallet - Dead blow hammer

	ROMUS
Non-rebound mallet	94 959



1.4. CUTTING (INSTRUCTIONS, TOOLS, ETC.)

Use a cutter (make one marking cut and two surface cuts before snapping the tile).

To help, you are recommended to heat the material with a hot-air paint stripper.

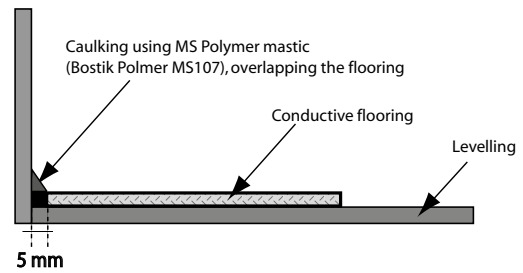
This method means that no jigsaw is necessary.

More difficult cuts (door frames, etc.) may be made using a jigsaw or high leverage nippers.

If there is a lot of cutting, we recommend keeping a circular saw on site.

1.5. EDGING

- Map out the room to balance the cuts at the edges.
- The cut tiles must be at least half a tile wide.
- Leave a space of 5 mm along the walls.
- Compression of the mastic is included in the gap.
- Caulk the edges with M S POLYMER mastic.



2. SPECIAL FEATURES

2.1. SKIRTING

Gerflor flexible skirting or VYNAFLEX skirting to finish the junction between floor and wall.

2.2. EXPANSION JOINTS IN SUBSTRATE

2.2.1 - Structural expansion joints recessed in the tiling

The two tiling areas are completely level.
Install the recessed expansion joints, type CJ 20+0 from ROMUS or similar.
GTI EL5 Connect tiles are installed loose-lay, so it is not necessary to stop on either side of the expansion joint.

2.2.2 - Covering expansion joints installed after GTI tiles are laid

In this case, the two areas of tiling on each side of the expansion joint must be treated as separate rooms, so a copper edging strip is required on both sides of the expansion joint cover.
The profile extends over the flooring and is fixed on one side only.

2.3. CUTTING AROUND DOOR FRAMES AND OTHER FEATURES



Gripper shear
Reference:
Gerflor: 0566 0001
Janser: 237 530 000
For cutting around door frames and awkward places.
Available from Gerflor.



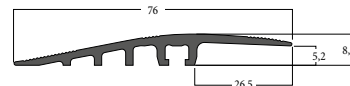
High leverage gripper shear
Reference:
Janser: 262 284 000
For cutting around door frames and awkward places.

2.4. ENDS AND DOORWAYS

Use the following profiles depending on conditions of use (traffic, humidity, etc...):

2.4.1 - Heavy traffic, pallet trucks, etc...

H0505 finishing profile



3m long profile strip with 10 pre-drilled countersunk holes, 4,6mm diameter
- The spacing between holes is 313mm
- The first hole is 90mm from the end
- The holes are de-burred after drilling

4x50mm TFZ screw and 6x30mm plug

TFZ Ø 4mm screw, 50mm long

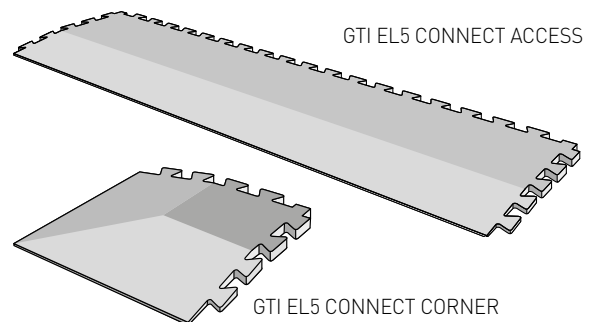


Ø 6mm plug, 30mm long



2.4.2 - Moderate traffic

GTI EL5 CONNECT ACCESS AND CORNER		
GTI EL5 CONNECT ACCESS	635x320 mm	Code : 2717 followed by colour code
GTI EL5 CONNECT CORNER	320x320 mm	Code : 2718 followed by colour code



These accessories must be glued down, either using a 2-components PU adhesive and weighted until the adhesive sets (6 to 12 hours), or using an acrylic double bonding adhesive.

3. REPAIRS

If a tile needs to be replaced:

- Cut a dovetail
- Disengage the dovetails
- Replace with a new tile

4. FIRST USE

- For normal traffic, the floor can be walked on immediately after it is laid.
- To move furniture, lay panels to distribute the load.
- Do not allow rubber feet to be used on furniture.

5. UNDERFLOOR HEATING

- Underfloor heating should be turned up gradually over the seven days after the flooring is laid.

6. MAINTENANCE

FINAL CLEANING

The floor covering can be used as soon as it is laid, but take these precautions:

- Wait at least 24 hours after installing the flooring to clean it,
- Remove dust and particles using a broom or an industrial vacuum cleaner,
- Clean the floor with a scrubber drier using an alkaline detergent,
- Rinse with clean water to remove all traces of the detergent,
- Leave to dry.

NB : DO NOT USE TOO MUCH WATER ON THE FLOORING TO PREVENT WATER PENETRATING BETWEEN THE TILES.

DAILY CARE

Refer to the care sheet for the product

